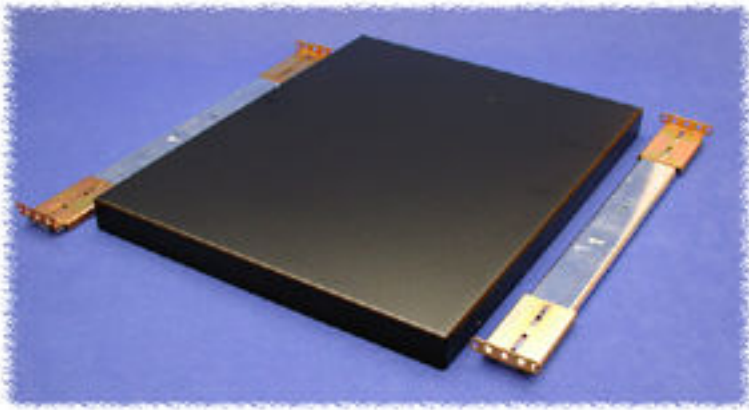


Shelves (Sliding) - Panel Mount (Two Pair of Panel Rails)

Path: [Home](#) > [Rack Index](#) > Shelves (Sliding) - Panel Mount - Two Pair of Panel Rails



[click to enlarge](#)



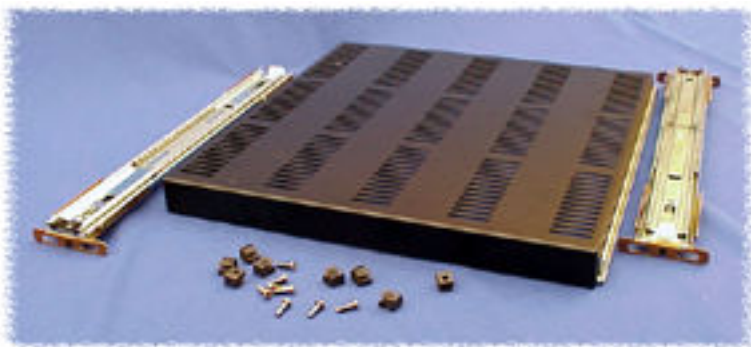
[Assembly
Instructions](#)

Rail Mounted Sliding Shelf (Unvented)

- Attach to both pair of 19" rack rails
- Heavy duty ball bearing slides included
- Heavy duty, 14 Ga. steel construction
- Weight load tested (RFUS2426BK1) to 120 pounds.
- Folded on all four sides for extra strength
- Rugged textured powder paint finish
- **MOUNTS ON TWO PAIR OF PANEL RAILS (FRONT & BACK)**

UNVENTED - 19" Rack Mount

Part Number	Color		Drawing File Size		.dxf File Size	Shelf Depth	Slide Travel
RSUS1918BK1 RSUS1918CG1	Black Grey/Beige		14K		94K	18"	18"
RSUS1921BK1 RSUS1921CG1	Black Grey/Beige		14K		95K	21"	20"
RSUS1926BK1 RSUS1926CG1	Black Grey/Beige		14K		95K	26"	26"
RSUS1931BK1 RSUS1931CG1	Black Grey/Beig		14K		95K	31"	28"



click to enlarge



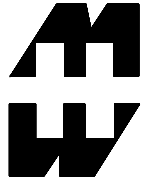
[Assembly Instructions](#)

Rail Mounted Sliding Shelf (Vented)

- Attach to both pair of 19" rack rails
- Provides a sturdy shelf without obstructing upward heat movement
- Heavy duty ball bearing slides included
- Heavy duty, 14 Ga. steel construction
- Weight load tested (RFUS2426BK1) to 120 pounds.
- Folded on all four sides for extra strength
- Rugged textured powder paint finish
- **MOUNTS ON TWO PAIR OF PANEL RAILS (FRONT & BACK)**

VENTED - 19" Rack Mount

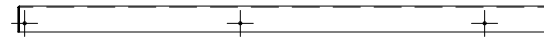
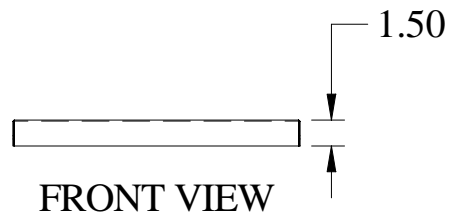
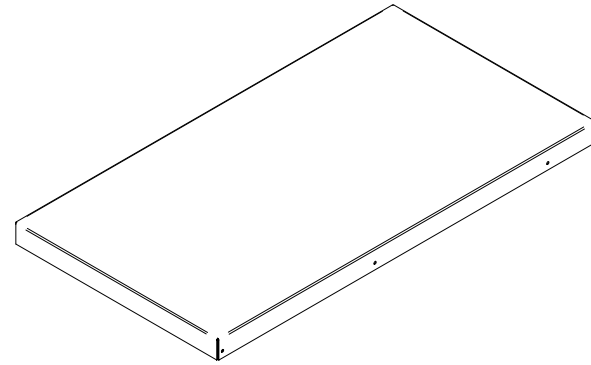
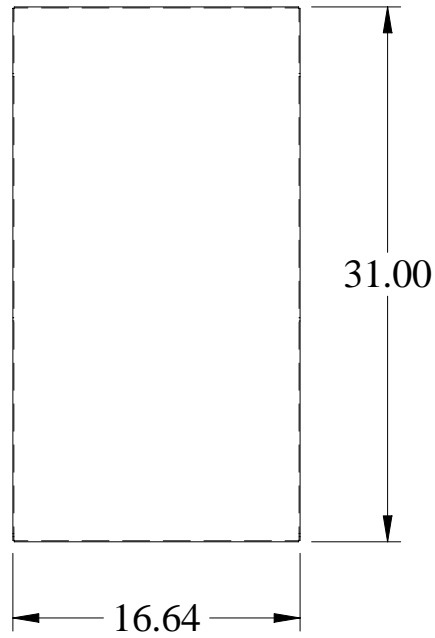
Part Number	Color		Drawing File Size		.zip File Size	Shelf Depth	Slide Travel
RSVS1918BK1 RSVS1918CG1	Black Grey/Beige		48K		72K	18"	18"
RSVS1921BK1 RSVS1921CG1	Black Grey/Beige		48K		73K	21"	20"
RSVS1926BK1 RSVS1926CG1	Black Grey/Beige		58K		92K	26"	26"
RSVS1931BK1 RSVS1931CG1	Black Grey/Beige		59K		91K	31"	28"



PART No. RSUS1931

ISOMETRIC VIEW NOT TO SCALE

SHELF EXTENDS 28" ON INCLUDED SLIDES
(SLIDES NOT SHOWN FOR CLARITY)



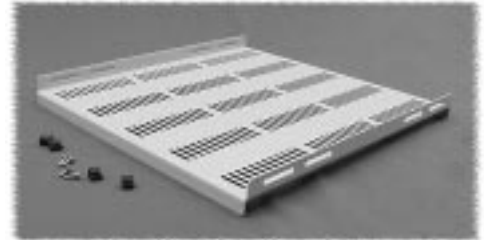
Shelves - Dual Pair Rail Mount

FIXED SHELVES

- Heavy duty, 14 Ga. steel construction, folded edges on all four sides for extra strength
- The vented version provides a sturdy shelf without obstructing upward heat movement
- Weight load tested to 350 pounds
- Sides folded up for easy hardware installation from above the shelf
- Sides are slotted for easy adjustment with most rail depth locations
- Rugged textured powder paint finish
- If used with our square hole rails you will need to order P/N **CPRSA** rail adaptor for each shelf ordered
- **MOUNTS ON TWO PAIR OF MOUNTING RAILS (FRONT & BACK)**

Part Number		Shelf Type	Shelf Depth
Black Textured	Beige Textured		
19" Width			
RFVS1918BK1	RFVS1918CG1	Vented	18"
RFVS1921BK1	RFVS1921CG1	Vented	21"
RFVS1926BK1	RFVS1926CG1	Vented	26"
RFVS1931BK1	RFVS1931CG1	Vented	31"
RFUS1918BK1	RFUS1918CG1	Unvented	18"
RFUS1921BK1	RFUS1921CG1	Unvented	21"
RFUS1926BK1	RFUS1926CG1	Unvented	26"
RFUS1931BK1	RFUS1931CG1	Unvented	31"
24" Width			
RFVS2418BK1	RFVS2418CG1	Vented	18"
RFVS2421BK1	RFVS2421CG1	Vented	21"
RFVS2426BK1	RFVS2426CG1	Vented	26"
RFVS2431BK1	RFVS2431CG1	Vented	31"
RFUS2418BK1	RFUS2418CG1	Unvented	18"
RFUS2421BK1	RFUS2421CG1	Unvented	21"
RFUS2426BK1	RFUS2426CG1	Unvented	26"
RFUS2431BK1	RFUS2431CG1	Unvented	31"

Vented



Unvented



SLIDING SHELVES

- Heavy duty, 14 Ga. steel construction, folded edges on all four sides for extra strength
- The vented version provides a sturdy shelf without obstructing upward heat movement
- Weight load tested to 120 pounds
- Slides are slotted for easy adjustment with most rail depth locations
- Rugged textured powder paint finish

Part Number		Shelf Type	Shelf Depth
Black Textured	Beige Textured		
19" Width			
RSVS1918BK1	RSVS1918CG1	Vented	18"
RSVS1921BK1	RSVS1921CG1	Vented	21"
RSVS1926BK1	RSVS1926CG1	Vented	26"
RSVS1931BK1	RSVS1931CG1	Vented	31"
RSUS1918BK1	RSUS1918CG1	Unvented	18"
RSUS1921BK1	RSUS1921CG1	Unvented	21"
RSUS1926BK1	RSUS1926CG1	Unvented	26"
RSUS1931BK1	RSUS1931CG1	Unvented	31"
24" Width			
RSVS2418BK1	RSVS2418CG1	Vented	18"
RSVS2421BK1	RSVS2421CG1	Vented	21"
RSVS2426BK1	RSVS2426CG1	Vented	26"
RSVS2431BK1	RSVS2431CG1	Vented	31"
RSUS2418BK1	RSUS2418CG1	Unvented	18"
RSUS2421BK1	RSUS2421CG1	Unvented	21"
RSUS2426BK1	RSUS2426CG1	Unvented	26"
RSUS2431BK1	RSUS2431CG1	Unvented	31"

Vented



Unvented

